

School Building —

(Continued From Page One) joined to the main building by two...

NOW OPEN! Original HAIR STYLES

Tel. HO 7-4334 for your next appointment Open Daily 9-6 Fri. Til 0 P.M.

GLORIA'S BEAUTY SALON

170 Main St. • East Haven

small flights of steps enclosed. The addition will necessitate the relocation of the present office of the school principal. It will provide for possible additions...

Plans are to enclose the brook which crosses the Gerrish Ave. site and asked how it would affect the plans. He was informed that the brook ran through the low part of the plot and that the school would be located on a higher level.

Clancy showed special interest in the location of the Tuttle Brook which crosses the Gerrish Ave. site and asked how it would affect the plans.

Plans are to enclose the brook which crosses the Gerrish Ave. site and asked how it would affect the plans.

In a routine file, the Board of Selectmen were authorized to enter into contracts and agreements necessary to carry out the recommendations of the Board of Finance and to borrow money for current expenses and to issue of revenue notes on terms acceptable to the board in amount not to exceed \$500,000.

Budget Approved —

(Continued From Page One) figures for the several departments were not circulated, although a copy had been available in the town clerk's office for public inspection.

The meeting was relayed by a small beagle-like mutt who wandered about in a nonpartisan manner accepting pads before ascending the auditorium stage to look over the meeting membership with a calculating eye.

Accounts To Visit Hamden Plant

The New Haven Chapter of the National Association of Cost Accountants will be the guests of the management of the Detroit Steel Corporation in Hamden, Connecticut on Tuesday.

The chapter members will meet at the office of the plant, 2061 State Street, Hamden, Connecticut on Tuesday. The chapter members will meet at the office of the plant, 2061 State Street, Hamden, Connecticut on Tuesday.

Michael Liso's Return From Trip To Italy

Mr. and Mrs. Michael Liso, of 105 Gerrish Ave., have returned to their home after a three-month tour of Italy.

Mr. and Mrs. Michael Liso, of 105 Gerrish Ave., have returned to their home after a three-month tour of Italy. They visited Rome, Naples, Venice, Pompeii, Forzeiga, Bari and Amalfi.

East Haven - Morris Cove RESIDENTS are invited to WEEK OF EVANGELISM

Special Services SUN-MON-WED-FRI. Oct. 18 to 23 at 7:30 P.M. Special Preacher Rev. Ross W. Holland, Dobbs Ferry, N. Y. PARK METHODIST CHURCH 13 TOWNSEND AVE. MORRIS COVE. Rev. Francis W. Carlson

Reddy Does the Wash in JIGTME He breezes through a week's washing in a matter of minutes. Takes all the real drudgery out of once back-breaking chores. A dash of soap, a flip of the switch, and your clothes are washed, rinsed and damp dried.

THE UNITED ILLUMINATING COMPANY 137 Temple Street, New Haven 2-6161



East Haven - Morris Cove RESIDENTS are invited to WEEK OF EVANGELISM

Easties Lose To Shelton By 8-6 Score In Second Defeat Of Season

Seemingly bedeviled by bad luck East Haven went down to its second defeat in three tries this season, losing 8 to 6 to a scrappy Shelton team at the High School field Saturday afternoon.

The Orange and Black scored all the points it needed to win within the first two minutes of the game, although the Easties narrowly came within winning distance during the start of the fourth quarter. The game opened on a Shelton kick-off which was carried by the Easties to their own 20-yard line. There a fumble by Don Pettinich, veteran player who contributed handsomely to last year's unbeaten record, placed the ball in the hands of the rival Gaels.



Nick Vajuso, East Haven quarterback, is shown in the act of catching a short pass as the Easties attempt to push on to score on Shelton. On the far right (10) is Dunaldich Pettinich, half-back. DeAngelo (87) Shelton center tries to block the pass.

East Haven - Morris Cove RESIDENTS are invited to WEEK OF EVANGELISM

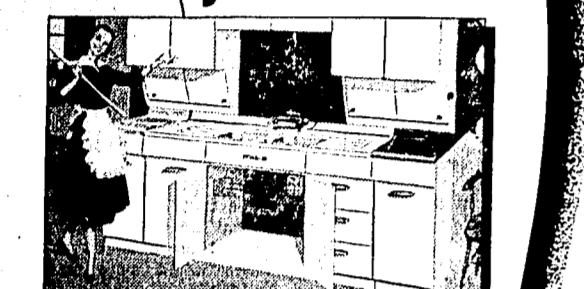
Special Services SUN-MON-WED-FRI. Oct. 18 to 23 at 7:30 P.M. Special Preacher Rev. Ross W. Holland, Dobbs Ferry, N. Y. PARK METHODIST CHURCH 13 TOWNSEND AVE. MORRIS COVE. Rev. Francis W. Carlson

Reddy Does the Wash in JIGTME He breezes through a week's washing in a matter of minutes. Takes all the real drudgery out of once back-breaking chores. A dash of soap, a flip of the switch, and your clothes are washed, rinsed and damp dried. Ask your dealer to tell you how little an electric washer costs to use, and how you can buy one now on easy budget terms.



Nick Vajuso, East Haven quarterback, is shown in the act of catching a short pass as the Easties attempt to push on to score on Shelton. On the far right (10) is Dunaldich Pettinich, half-back. DeAngelo (87) Shelton center tries to block the pass.

Remodel your kitchen



EASY CREDIT TERMS

SENSATIONAL DISHMASTER! MURRAY FOOD WASTE DISPOSER! BIG CABINET SINK! WORK SPACE GALORE! WORLDS OF STORAGE SPACE! All yours in the MURRAY HOMEMAKING CENTERS

SEE THEM and ask about Murray's new, exclusive 60-second planning at - TOMMY'S FURNITURE HOUSE

140 MAIN ST. • EAST HAVEN • TEL. HO 7-1707

EAST HAVEN'S 1953 Buying & Service Directory

- Augie's Auto Repair, GEORGE A. SISSON Insurance, LINDEN CONVALESCENT HOSPITAL, CENTRA SHOE REBUILDER, RALPH P. CASTELLON General Insurance

- GEN'S LAUNDRY and DRY CLEANING, A. C. P. ELECTRIC SERVICE, INC., and other local businesses.

Sidewalk, Lights —

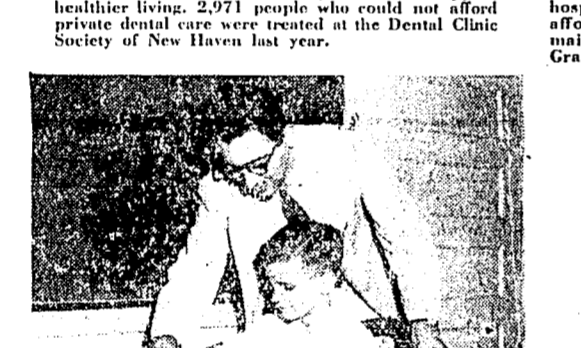
(Continued From Page One) on Park Pl., Foote Rd., and Martin Rd.

Clancy also announced this week that the Hamden firm of Raymond F. Bahr is being employed by the Town to clear the storm sewers on Main St. from High St. to Tuttle Brook.

The first selection also announced the awarding of a contract to the Pond Lily Tree Expert Co. to cut stumps left by the removal of diseased trees.



DENTAL CLINIC SOCIETY OF NEW HAVEN. Properly cared for teeth are a prime aid to happier, healthier living.



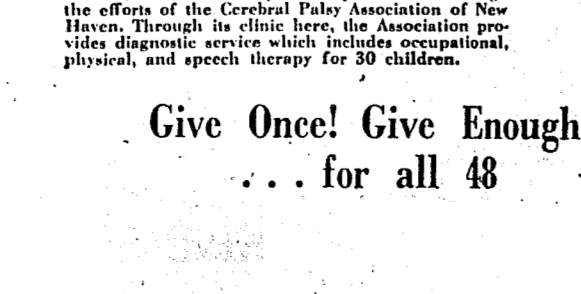
GRACE-NEW HAVEN COMMUNITY HOSPITAL. By contributing to the cost of medical treatment and hospital care for those patients who are unable to afford a private physician, the United Fund helps maintain necessary care for the sick and injured at Grace-New Haven Hospital.



CLIFFORD BEERS GUIDANCE CLINIC. A psychiatrist, play therapist, and two social workers at the Clifford Beers Guidance Clinic last year helped 214 emotionally disturbed children find greater stability and happiness through consultation and guidance.



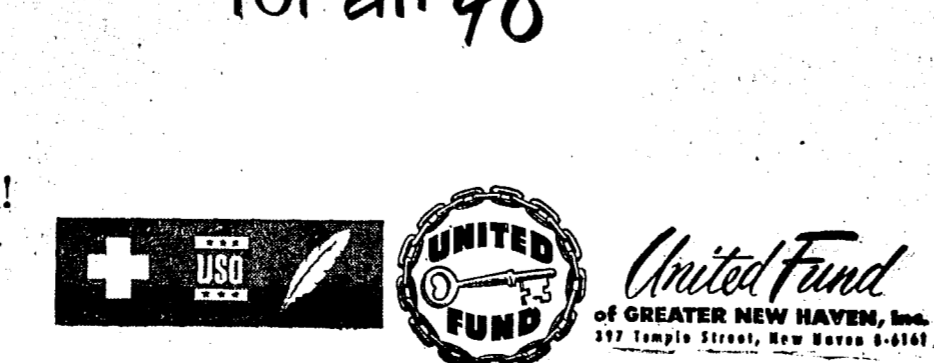
JEWISH HOME FOR THE AGED. 106 men and women now reside at the Jewish Home for the Aged, where complete facilities are provided to bring cheer, comfort and health to elderly persons.



CEREBRAL PALSY ASSOCIATION. Victims of Cerebral Palsy find hope and care through the efforts of the Cerebral Palsy Association of New Haven.

Your Pledge Helps 6 Hospitals and Clinics

Give Once... Give Enough... for all 48



Happy Carving Every Time With First National Meats! RIB ROAST 7-INCH CUT LB 65¢ LAMB LEGS 7-INCH CUT LB 65¢

Smoked Picnics, Link Sausage, Here's How You Save Money on Food Bills at FIRST NATIONAL!

Look What You Get from one pound of FINEST POP CORN

Enter \$20,000 Westinghouse LIGHT BULB CONTEST

TRY THIS MEAL! CODFISH CAKES & BEANS, Fresh Plum Coffee Cake

For Springtime Beauty, plant your HOLLAND BULBS NOW! 60 VARIETIES of Beautiful Bulbs

J. A. LONG COMPANY Large Selection of GARDEN BULBS WINTER HOUSE PLANTS

LORE DICKERSON School of Dancing ANNOUNCES GRAND OPENING of NEW STUDIO

WELCOME WAGON Gift & Greeting for You - through SWANSON FROZEN PIE SALE

